

**FR** Garniture pour mitigeur thermostatique

**EN** Trim for THG thermostat

**CN** 恒温阀面板

**DE** Thermostat-Garnitur

**ES** Embalaje del grifo termostático

**IT** Parte esterna del miscelatore termostatico

**NL** Afdekplaat met knop voor thermostaat

**RU** Ручка регулировки для термостата THG

**AR** بطاقة للخلاط منظم الحرارة

**Outillage (Non-fourni)**

Tools (Not provided)

工具 (自备)

Werkzeuge (Nicht mitgeliefert)

Herramientas (no suministradas)

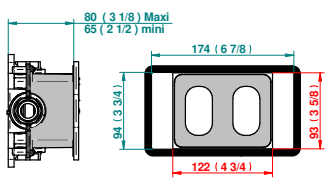
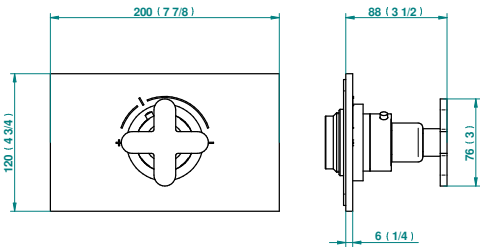
Utensili (non forniti)

Gereedschap (Niet meegeleverd)

инструменты (Не обеспечен)

(الأدوات (غير مرفقة)

mm/inch

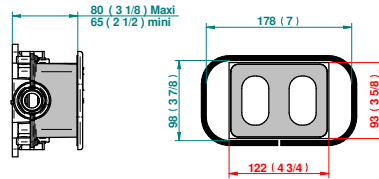
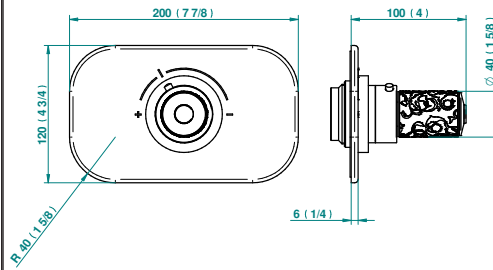


Boîte / Box    Joint Plaque / Seal Plate

Compatible with



5200AE  
5200AE/US  
5200AE/W

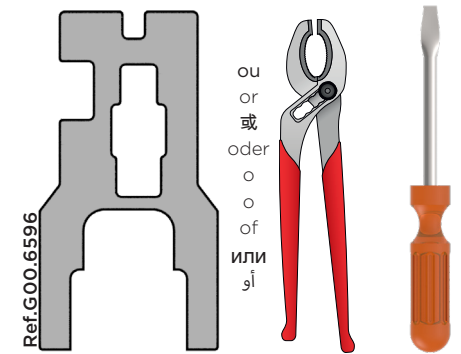


Boîte / Box    Joint Plaque / Seal Plate

Compatible with



5200AE  
5200AE/US  
5200AE/W



Assurez vous d'avoir purgé les canalisations et vérifié l'étalonnage de la cartouche

Make sure you have purged the water pipes, and checked the calibration of the cartridge

确保已清空管道并检查滤芯的校准

Stellen Sie sicher, dass Sie die Kanäle gespült und die Kalibrierung der Kartusche überprüft haben

Asegúrese de que ha limpiado los conductos y verificado la calibración del cartucho

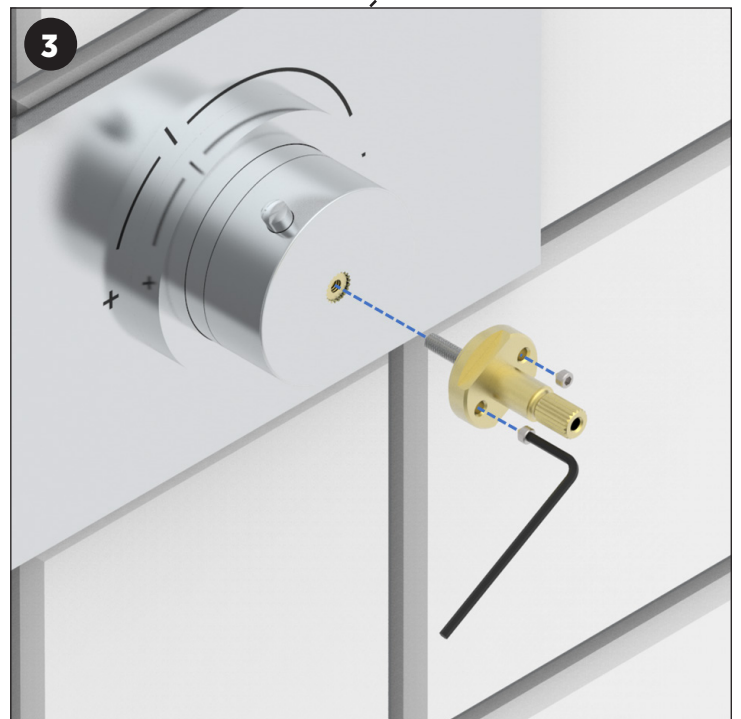
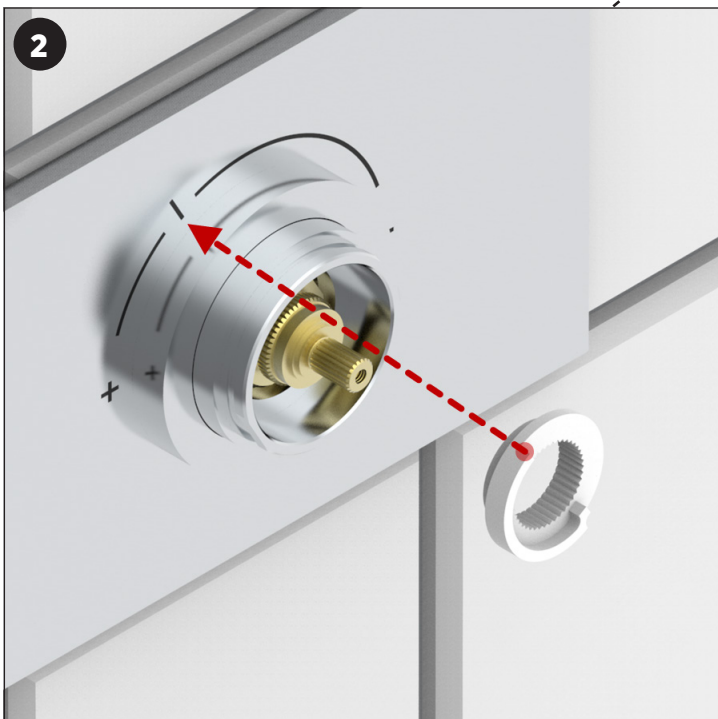
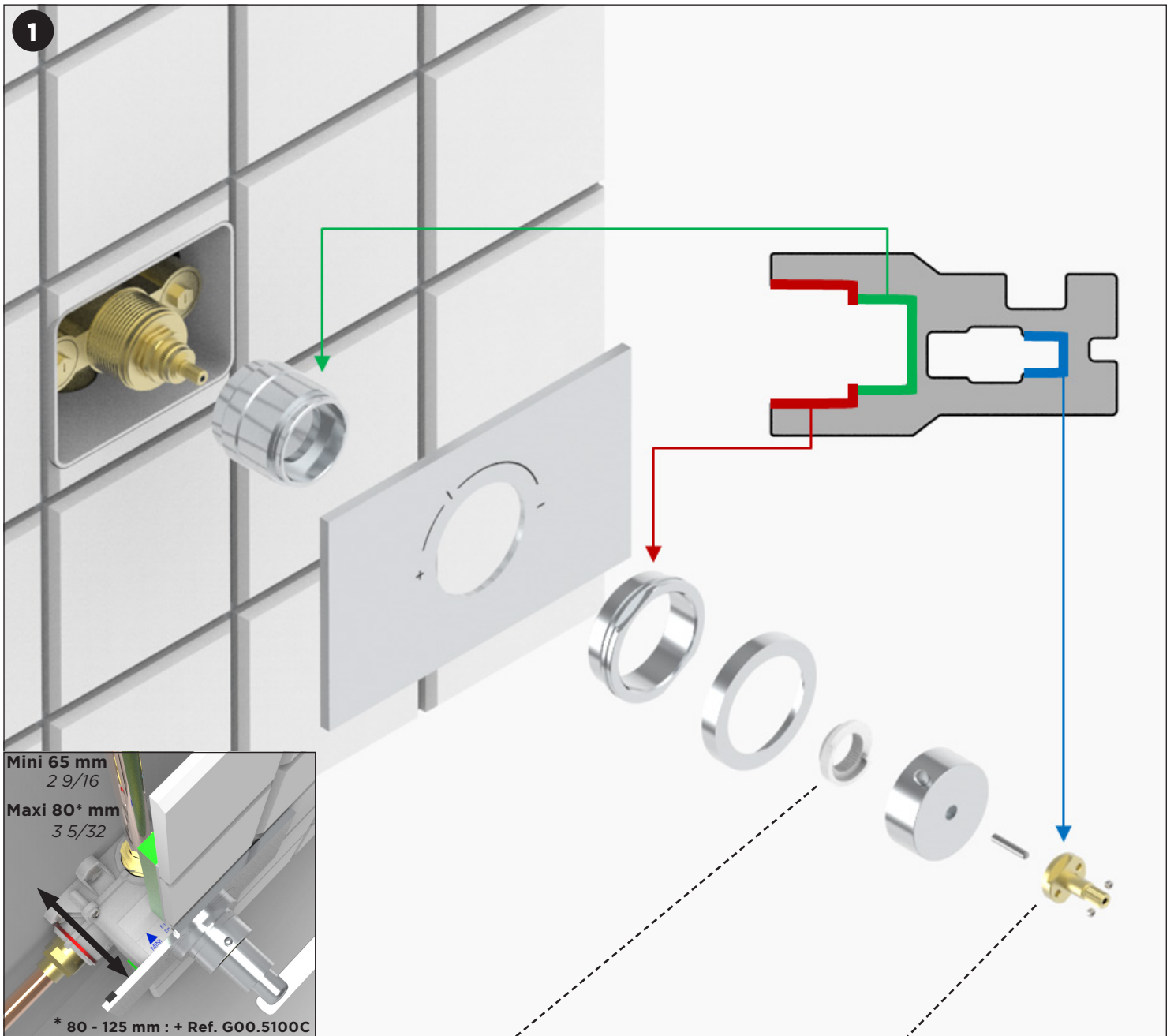
Zorg ervoor dat u de leidingen hebt ont-lucht en de kalibratie van de cartouche hebt gecontroleerd

Assicurarsi di aver spurgato le condutture e controllato la calibrazione della cartuccia

Убедитесь, что вы очистили трубопроводную сеть и проверили калибровку картриджа

نم قیقحتو تاونقل الري هطت نم دعات تمشوخرال قرياع





Montage des croisillons / manettes

Handle / lever assembly

装配十字接头 / 手柄

Montage von Traversen / Armaturen

Montaje de separadores/palancas

Montaggio dei transetti/manopole

Montage kraanknoppen/handgreep

Монтаж крестообразных рукояток / рычагов

تركيب ضوابط صليبية/مقابض

4

## 4 cas possibles

4 possible cases

4 种可能的案例

4 mögliche Fälle

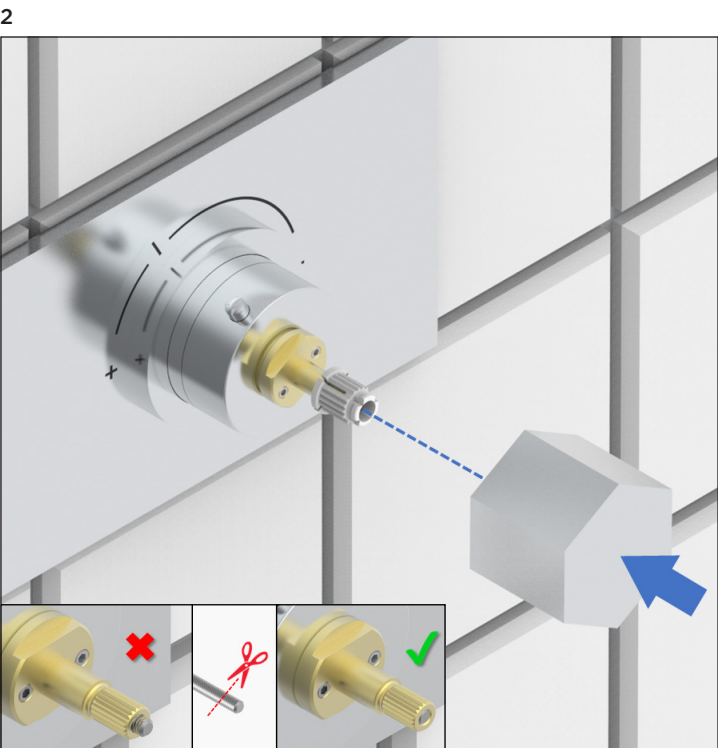
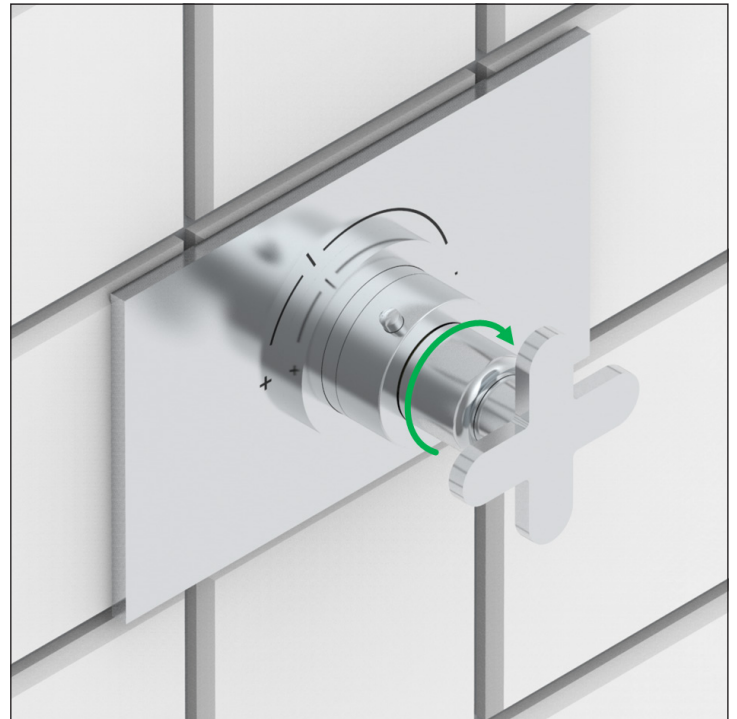
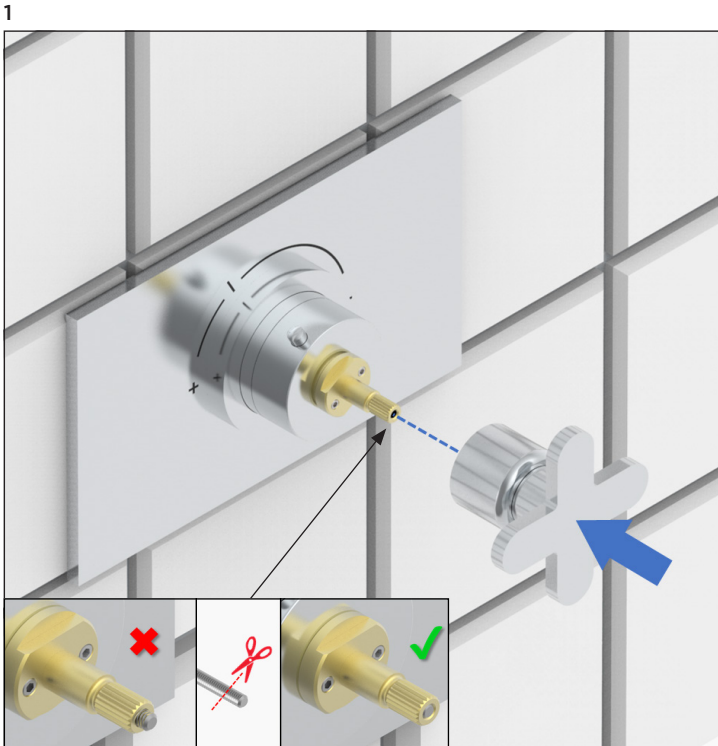
4 casos posibles

4 casi possibili

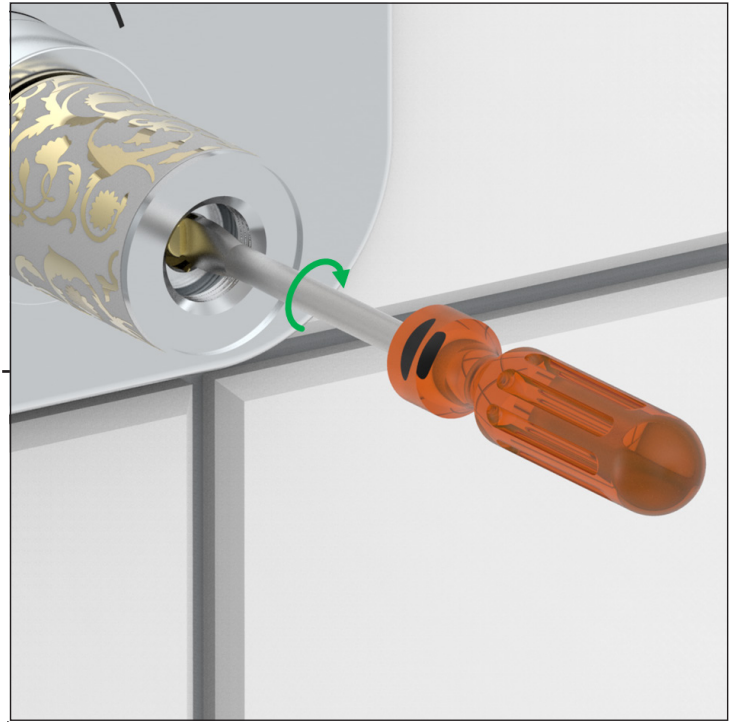
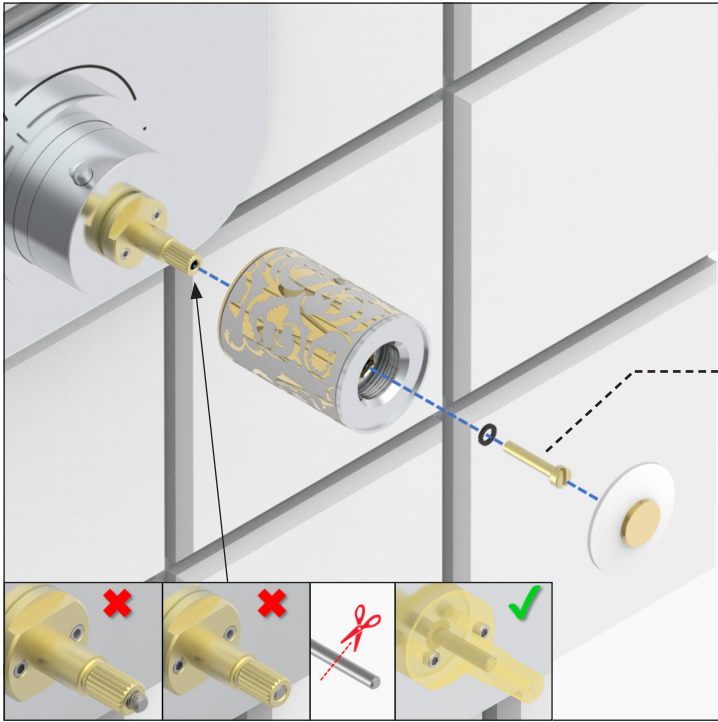
4 gevallen mogelijk

4 варианта возможны

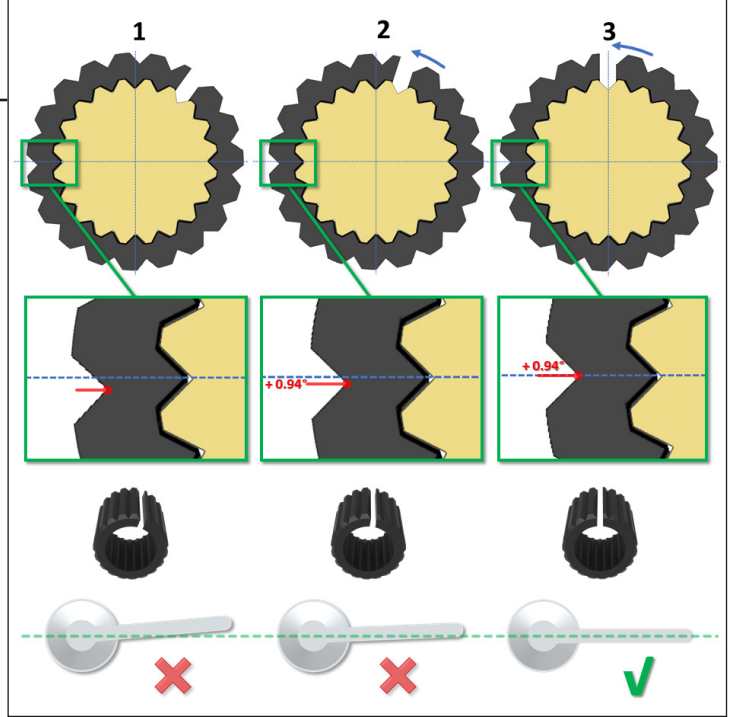
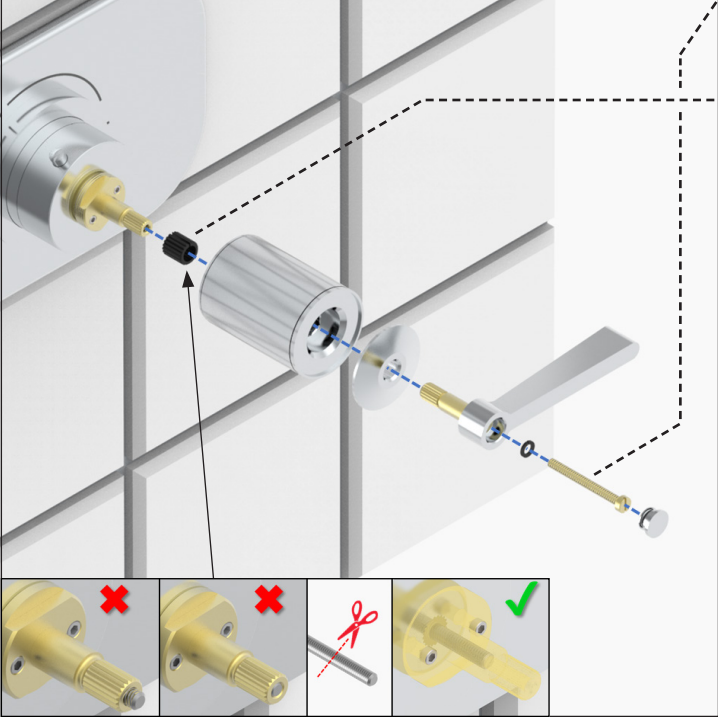
4 حالات ممكنة



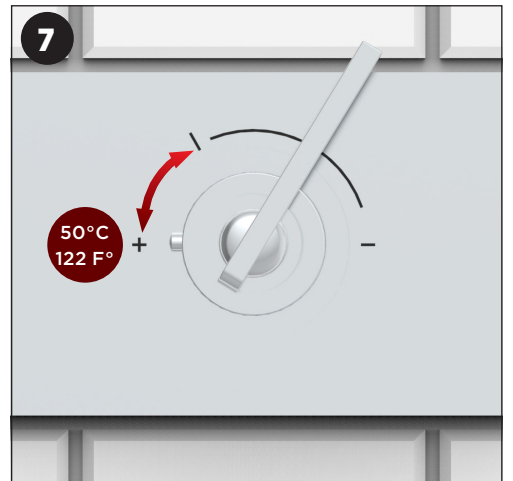
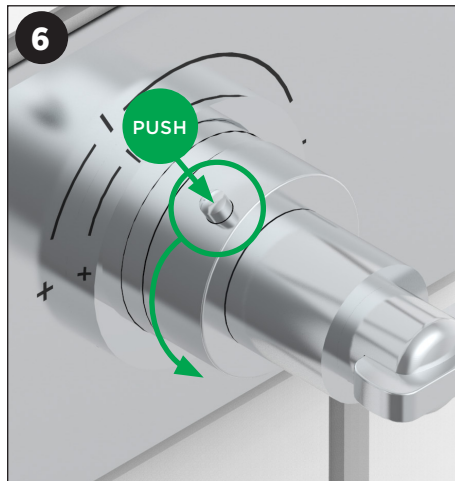
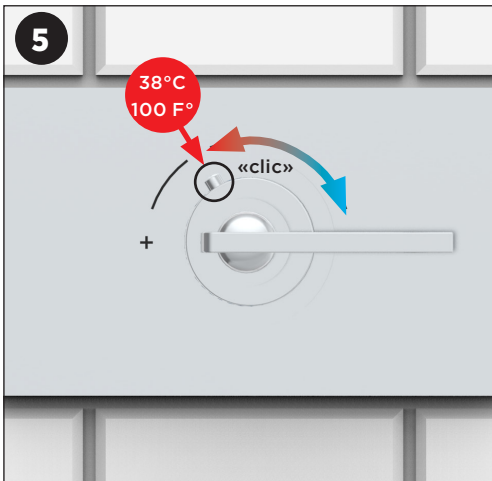
3



4



Réglage de température / Temperature adjustment / 温度校准 / Temperatureinstellung / Ajuste de temperatura / Regolazione della temperatura / Instellen van temperatuur / Регулировка температуры / ضبط الحرارة



4