

60" S

Item Number:
150-V60S-ANW

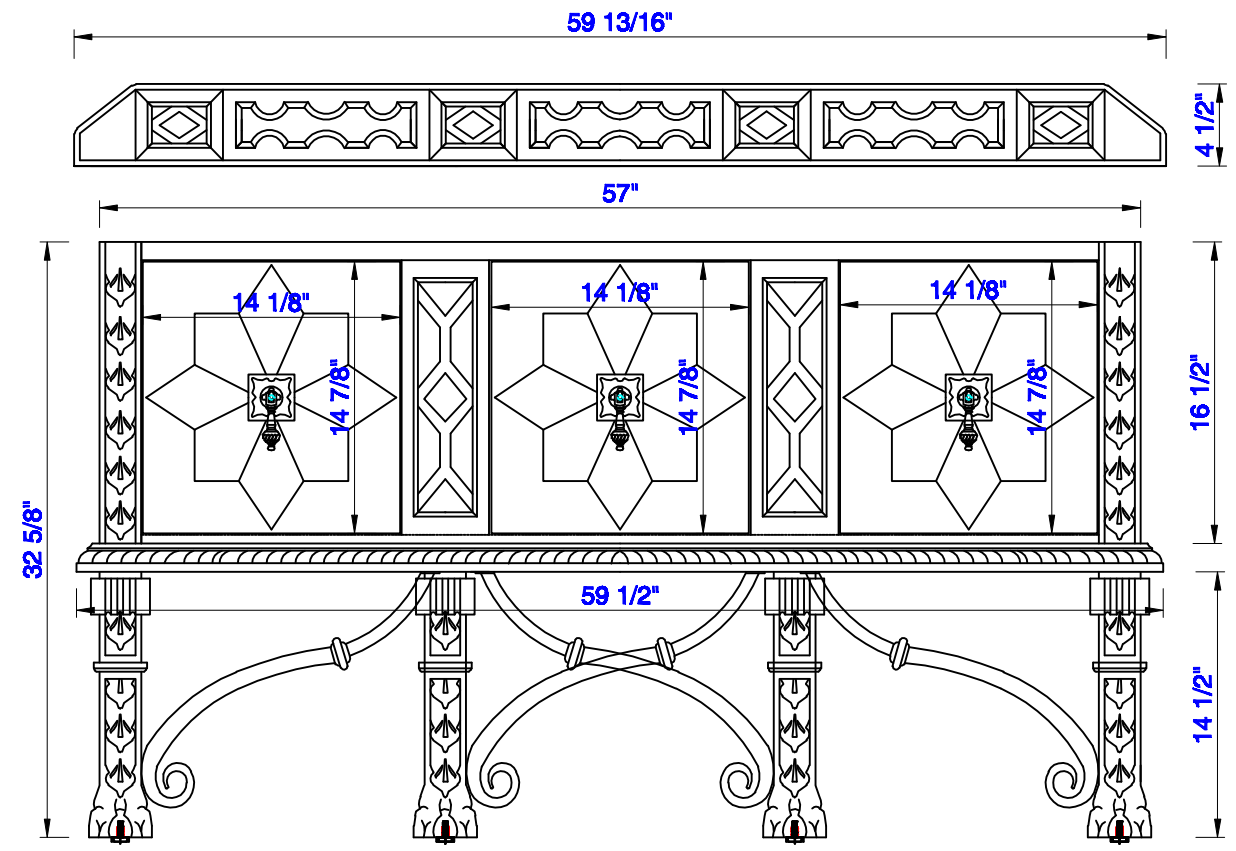
JAMES MARTIN



VANITIES

Brookfield 60" Cabinet

Diagrams with Dimensions
page 01 of 03



NOTE ONE: Countertops are not shown in these diagrams. (Cabinet Only)

NOTE TWO: Wood Backsplash (Shown) is designed for the molding detail to align with sinks in James Martin's Optional Countertops.

Customers' own countertops and sinks may align differently.

Please consult our website for Countertop Diagrams: www.jamesmartinvanities.com

60" S

Item Number:
150-V60S-ANW

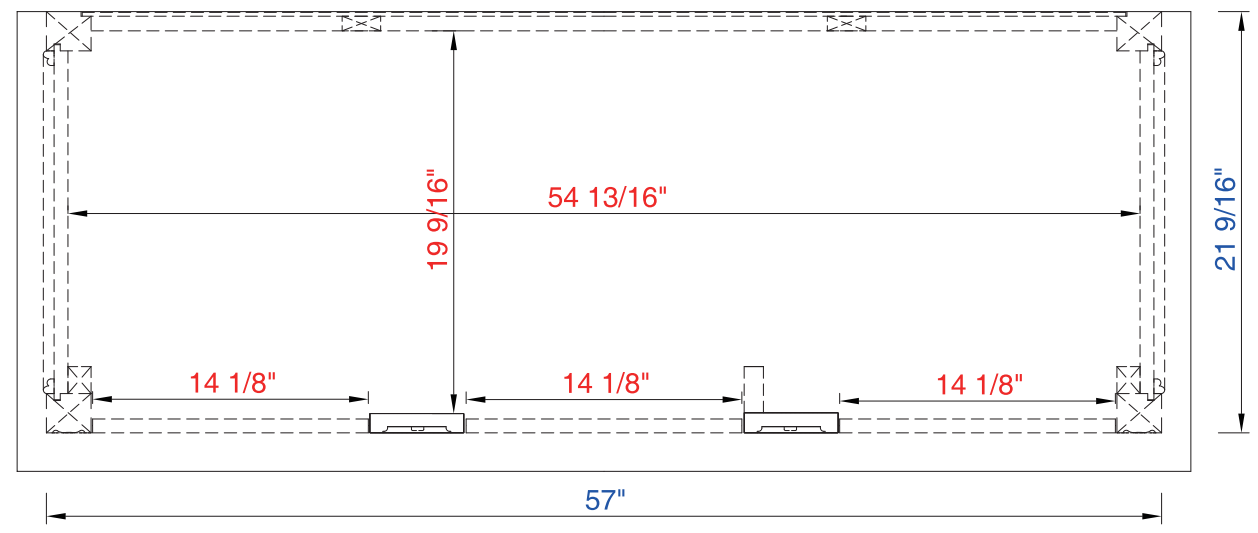
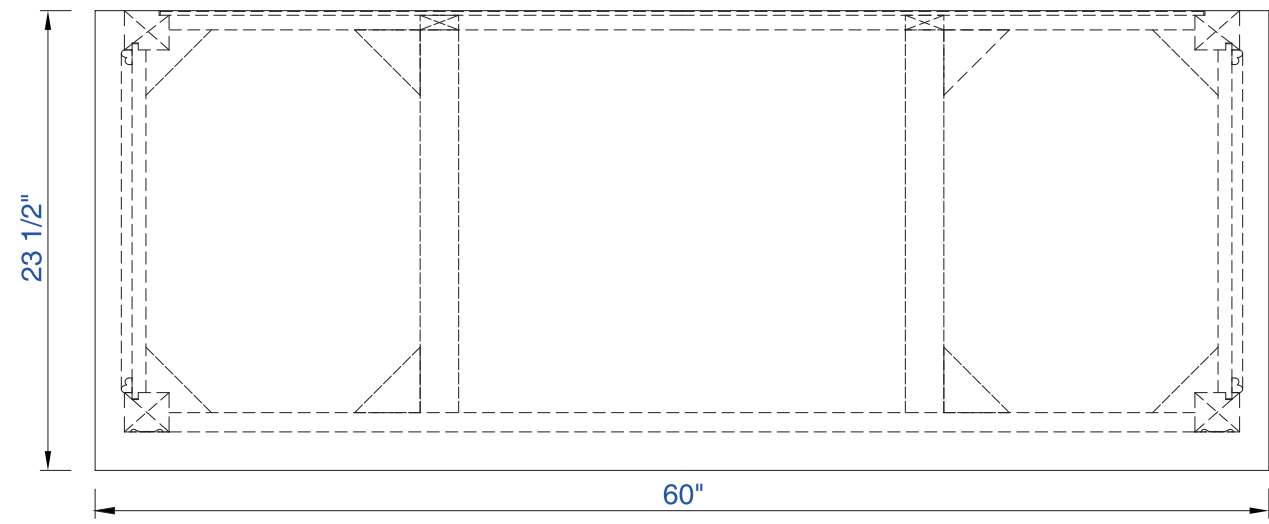
JAMES MARTIN



VANITIES

Brookfield 60" Cabinet

Diagrams with Dimensions
page 02 of 03



NOTE ONE: Countertops are not shown in these diagrams. (Cabinet Only)

60" S

Item Number:

150-V60S-ANW

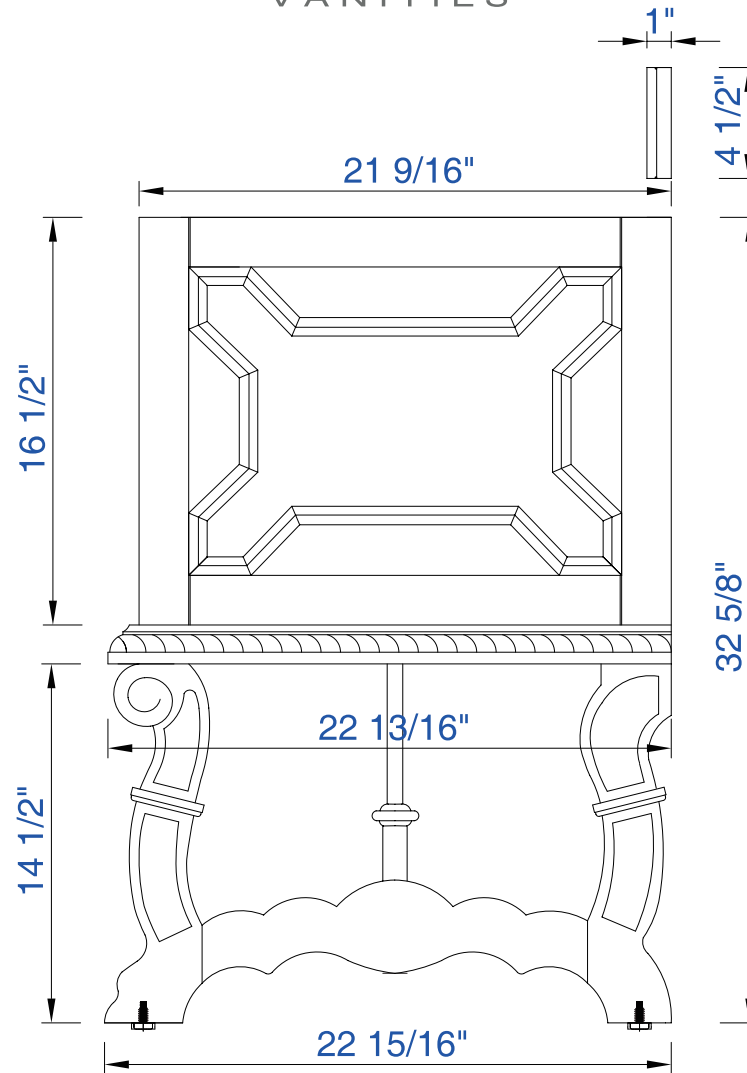
JAMES MARTIN



VANITIES

Brookfield 60" Cabinet

Diagrams with Dimensions
page 03 of 03



NOTE ONE: Countertops are not shown in these diagrams. (Cabinet Only)

NOTE TWO: Wood Backsplash (Shown) is designed for the molding detail to align with sinks in James Martin's Optional Countertops. Customers' own countertops and sinks may align differently.

Please consult our website for Countertop Diagrams: www.jamesmartinvanities.com

1524mm

Item Number:
150-V60S-ANW

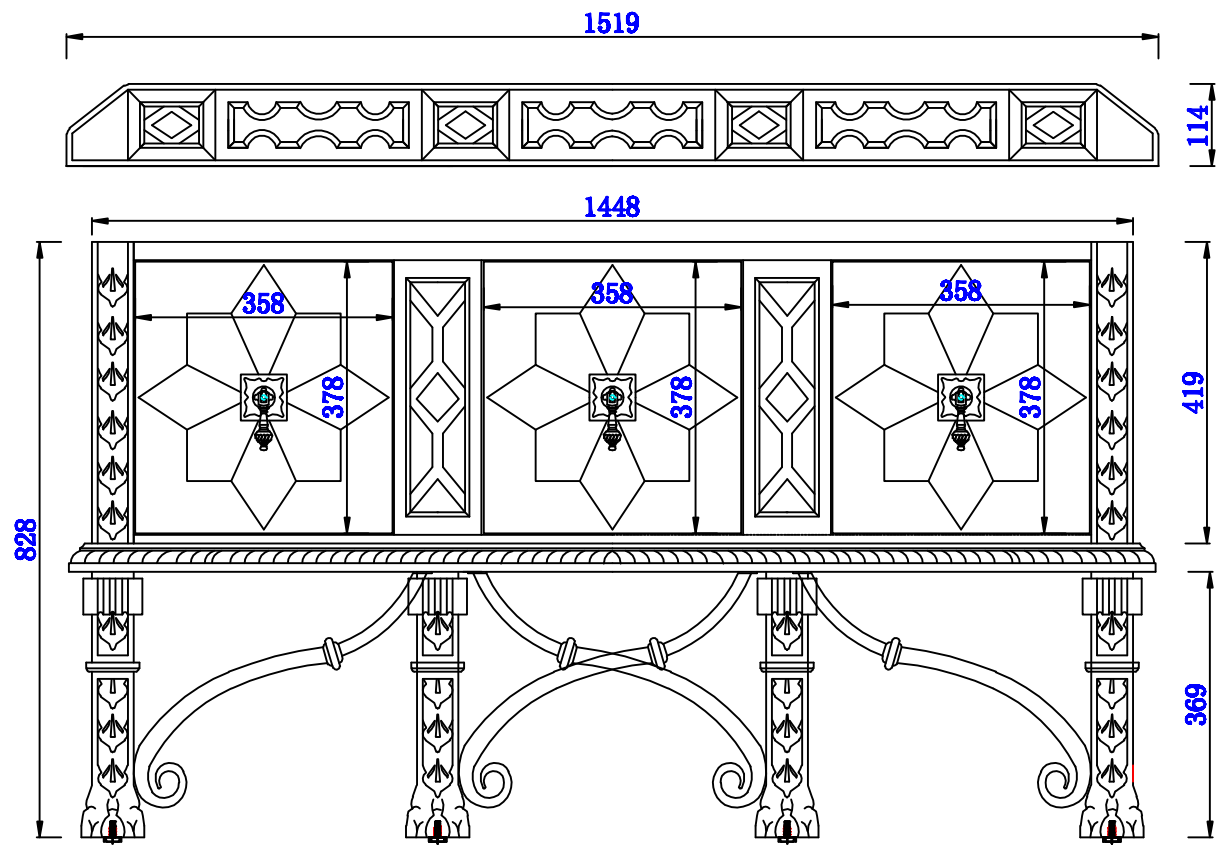
JAMES MARTIN



VANITIES

Balmoral 1524mm Cabinet

Diagrams with Dimensions
page 01 of 03



NOTE ONE: Countertops are not shown in these diagrams. (Cabinet Only)

NOTE TWO: Wood Backsplash (Shown) is designed for the molding detail to align with sinks in James Martin's Optional Countertops.

Customers' own countertops and sinks may align differently.

Please consult our website for Countertop Diagrams: www.jamesmartinvanities.com

1524mm

Item Number:
150-V60S-ANW

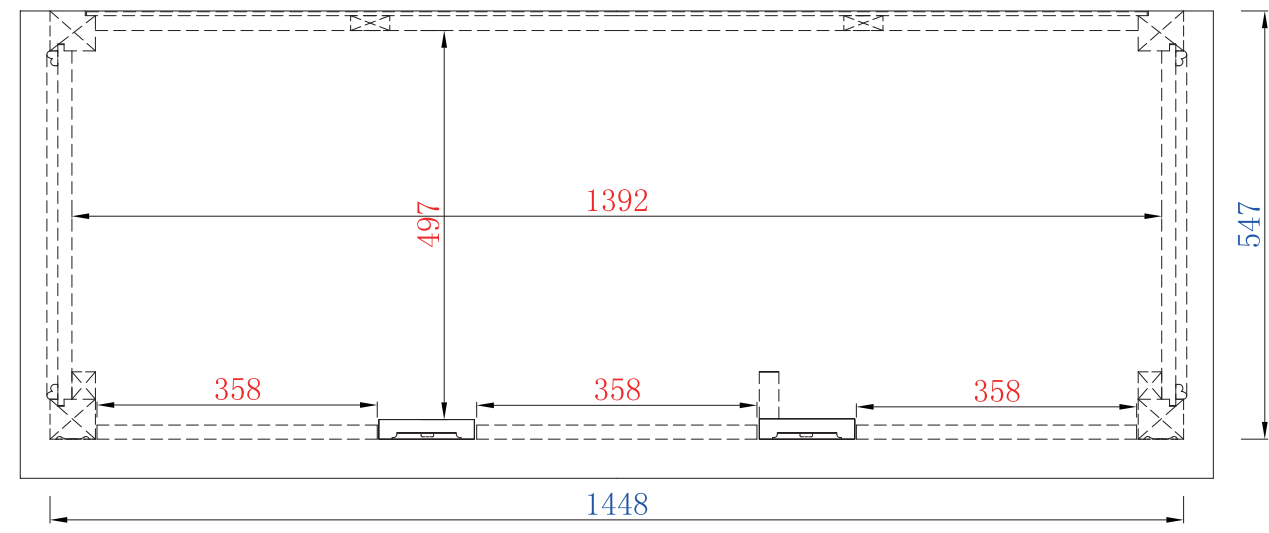
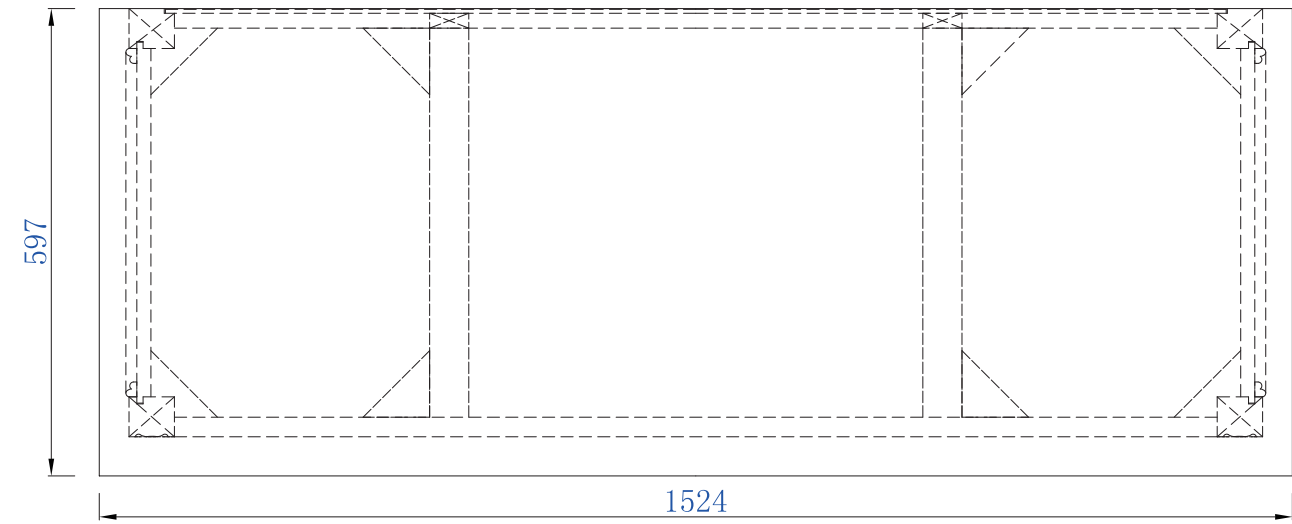
JAMES MARTIN



VANITIES

Balmoral 1524mm Cabinet

Diagrams with Dimensions
page 02 of 03



NOTE ONE: Countertops are not shown in these diagrams. (Cabinet Only)

1524mm

Item Number:
150-V60S-ANW

JAMES MARTIN
VANITIES

Balmoral 1524mm Cabinet
Diagrams with Dimensions
page 03 of 03

Technical drawing of the Balmoral 1524mm Cabinet showing dimensions:

- Width: 547mm
- Height: 419mm
- Thickness: 25mm
- Height: 114mm
- Height: 828mm
- Width: 579mm
- Height: 369mm
- Width: 582mm

NOTE ONE: Countertops are not shown in these diagrams. (Cabinet Only)

NOTE TWO: Wood Backsplash (Shown) is designed for the molding detail to align with sinks in James Martin's Optional Countertops. Customers' own countertops and sinks may align differently. Please consult our website for Countertop Diagrams: www.jamesmartinvanities.com