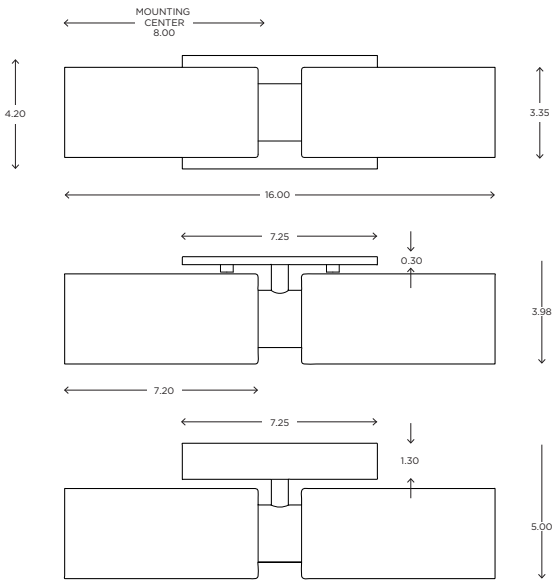


Luxe Duo

ADA | CUSTOM OPTIONS

FL version is not ADA



The Luxe Duo sconce is a compact fixture that packs a punch, perfect for over the cabinet mounting or along side a mirror. Its high light output and small form factor allows mounting over a variety of cabinet widths and is bright enough as the sole light source in smaller spaces.

DIMENSIONS

4.20"H x 16.00"W x 3.98"P

LAMPING / VOLTAGE

- [2] 100W Max Incandescent Medium Base
1250 Lumens, 2700K, 120V, non-dimming
- [2] 26W Fluorescent CFL GX24q-3 Base
1800 Lumens, 3000K, 120V, non-dimming
- [2] 9.5W LED 60W Equiv. Medium Base
800 Lumens, 2700K, 120V, dimming

FINISH

Brushed Nickel, Polished Nickel, Polished Chrome

DIFFUSER

Shiny Opal Glass

Customize this fixture to your specific needs

Fixture can be mounted VERTICALLY or HORIZONTALLY



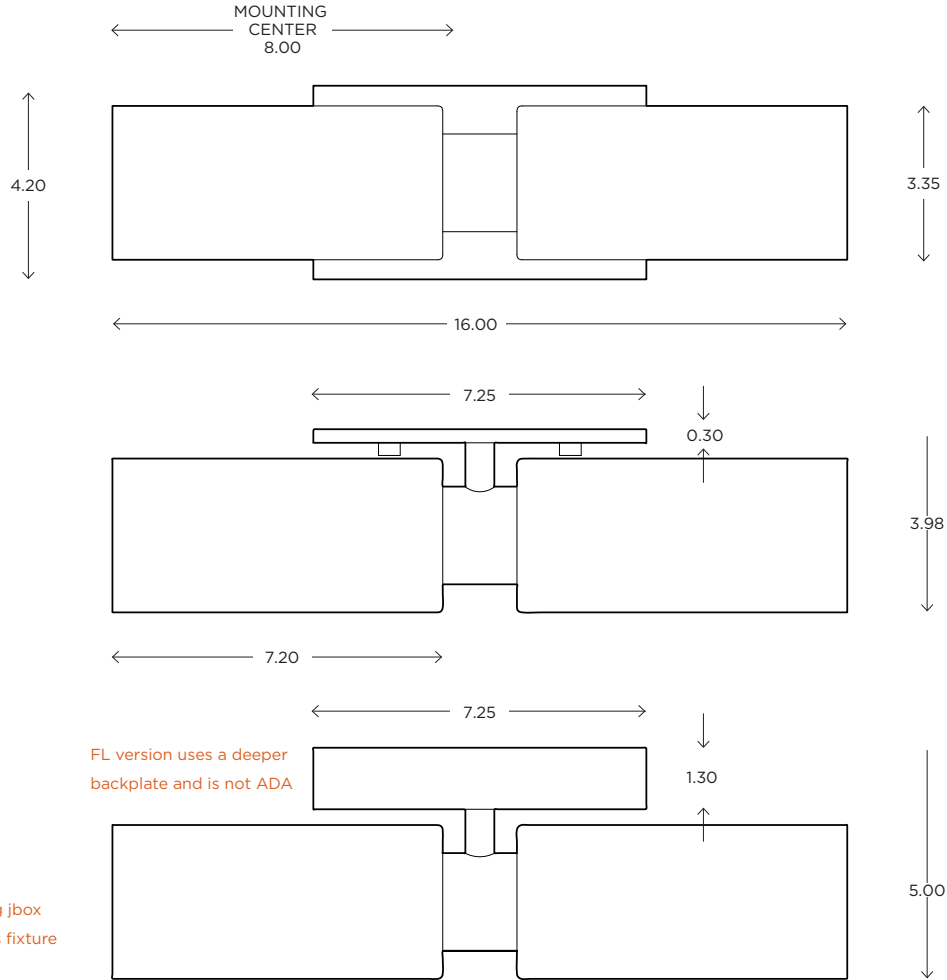
Ayre Architectural Lighting
14 Bristol Drive, Unit B
South Easton, MA 02375

Tel 508.205.0545
Toll Free 877.722.AYRE
Fax 508.205.0548

ayrelight.com

Luxe Duo

ADA CUSTOM OPTIONS



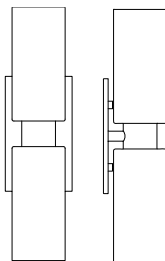
*Requires standard single gang jbox installed in same orientation as fixture

Refer to the instructions for correct j-box placement and installation requirements.

Fixture can be mounted VERTICALLY or HORIZONTALLY

Est. Weight: 4.78 lbs 

MODEL
LUXE DUO // LUXD



DIMENSIONS

Height: 4.20
Width: 16.00
Projection: 3.98

FIXTURE TYPE

ADA Sconce / A
FL version is not ADA

DIFFUSER

Shiny Opal Glass / SO

FINISH

Brushed Nickel / BN
Polished Nickel / PN
Polished Chrome / CH

LAMPING / VOLTAGE

INCANDESCENT / INC
[1] 100W Medium Base
120V, dimming
FLUORESCENT / FL
[1] CFL 26W GX24q-3 Base
120V, non-dimming *not ADA*
LED / LED
[2] 9.5W Medium Base
120V, dimming

RELATED PRODUCTS

CIRC PENDANT // CIRP

CLIK SCONCE // CLK 1

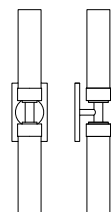
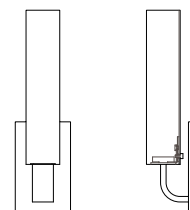
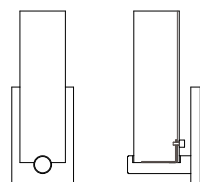
ADA

REFLEX SCONCE // REF1

ADA

CIRC SCONCE // CIRD

ADA



Ayre Architectural Lighting
14 Bristol Drive, Unit B
South Easton, MA 02375

Tel 508.205.0545
Toll Free 877.722.AYRE
Fax 508.205.0548

ayrelight.com